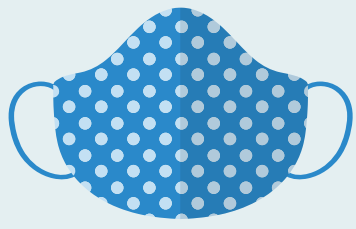


COVID-19 PPE Use Guide



Cloth Mask

Use:

- Residents should use cloth or surgical mask during direct contact with others including masked staff or when leaving their room

Notes:

- Ensure nose and mouth are covered
- Dispose if damaged, soiled, or difficult to breathe through



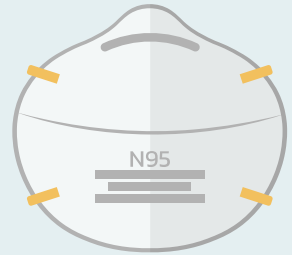
Surgical Mask

Use:

- Staff use at all times
- Residents should use cloth or surgical mask during direct contact with others including masked staff or when leaving their room

Notes:

- Can be reused if stored in a cool, dry place such as a paper bag
- Dispose if damaged, soiled, or difficult to breathe through



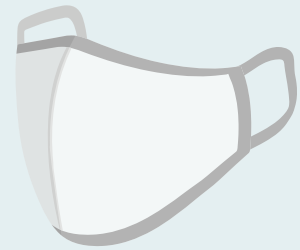
N95 Mask

Use:

- Staff use for direct COVID-19 positive resident care
- Aerosolizing procedures

Notes:

- Suspend fit testing to preserve supply
- Perform seal check at each donning
- Can be reused if stored in a cool, dry place such as a paper bag
- Dispose if damaged, soiled, or difficult to breathe through



KN95 Mask

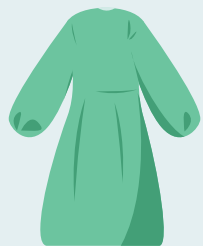
Use:

- Use when N95s are not available

Notes:

- Approved by FDA for use during COVID-19

- Washable with hot water or alcohol, per instructions
- Can be reused if stored in a cool, dry place such as a paper bag
- Dispose if damaged, soiled, or difficult to breathe through



Reusable Gown

Use:

- Can be used with both negative and positive COVID-19 resident care

Notes:

- Can be hung in positive resident's room. Clean routinely
- Washable if in good condition
- Recommended for use in laundry if community is COVID positive



Disposable Gown

Use:

- Can be used with both negative and positive COVID-19 resident care

Notes:

- Same gown can be used through COVID-19 positive unit
- Dispose after shift, or if damaged or soiled
- Recommended for use in laundry if community is COVID positive



Goggles

Use:

- Required for direct patient care

Notes:

- Washable in bleach solution
- Recommended for use in laundry, dietary and housekeeping if community is COVID positive



Face Shield

Use:

- Required for direct patient care

Notes:

- Washable in bleach solution with foam removed
- Recommended for use in laundry, dietary and housekeeping if community is COVID positive



Gloves

Use:

- Required for all COVID-19 positive resident care, and care requiring gloves regardless of COVID-19 status

Notes:

- Single use
- Wash hands between each use

Resources:

- <https://www.cdc.gov/coronavirus/2019-ncov/hcp/ppe-strategy/face-masks.html>
- <https://www.fda.gov/medical-devices/letters-health-care-providers/surgical-mask-and-gown-conservation-strategies-letter-health-care-providers>
- <https://www.osha.gov/memos/2020-04-08/expanded-temporary-enforcement-guidance-respiratory-protection-fit-testing-n95>
- <https://www.cdc.gov/niosh/docs/2018-130/pdfs/2018-130.pdf?id=10.26616/NIOSH PUB2018130>
- <https://multimedia.3m.com/mws/media/1824777O/fit-testing-during-urgent-use-of-new-respiator-models-technical-bulletin.pdf>
- Health Dimensions Group <https://healthdimensionsgroup.com/>